



Service Enclosure and Impact Mount™ SP Connector

Service Enclosure and IMT™ SP Connector

Feature and benefits

- Epoxy less SP connector
- Minimize space for indoor and Outdoor location
- Ability to reopen for service
- For buffer applications
- Mounted with all positive-stop mechanical tool
- Field installable and user friendly (5 minutes installation per connection)

Applications

- Datacom
- FTTH
- FTTP
- Industrial
- Security equipment

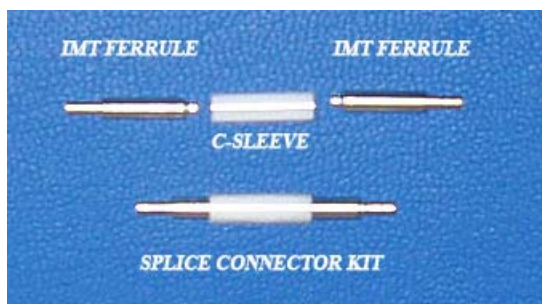


Impact Mount™ Technology Concept

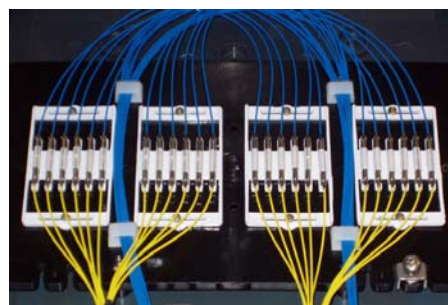
The mounting process is accomplished in three steps:

- Impact Mount™ tool dynamically compresses the metal ferrule tip around the fiber.
- Crimps buffer at the rear of the connector.
- Polishes end of ferrule in 20 seconds.

Impact Mount™ is a registered trademark of Valde Fiber Optics, Inc.



IMT™ SP Connector kit



SP Connector Cassettes

Performance Specifications

INLINE IMPACT MOUNT™ SP CONNECTOR for both multimode and single mode applications	Multimode	Single mode
Fiber O.D. (Nominal)	125,140 & 230 micron	125 micron
Cable O.D. (Nominal)	3 mm	3 mm
Insertion Loss (dB)	0.5 dB typical	0.5 dB typical
Repeatability (100) Reconnects	<0.2 dB	<0.5 dB
Pull Strength, Minimal: Kevlar/Buffer	20 Kg. / 1 Kg.	20 Kg. / 1 Kg.
Temperature cycling: -40C to 80 C	0.3 dB max. change	0.3 dB max. change
SP Connector Material	Metal	Metal
Mounting time	< 5 min.	< 5 min.

Ordering Information

Valde Impact Mount™ Termination kit is required.

<u>P/N</u>	<u>Description</u>
130-1001	Service Enclosure
127-1xxx	IMT™ SP connector, multimode
128-1xxx	IMT™ SP connector, single mode

Please specify custom hole sizes (xxx), e.g. 127-1125. Pigtail/cable assemblies are also available.

Sales & Technical Information

Please contact our office at:
 Tel: +86-21-58151515
 Fax: +86-21-58153289
 E-mail: info@valde.com.cn
www.valde.com.cn

